

② Fungi

What You'll Learn:

Identify the characteristics shared by all fungi.

Classify fungi into groups based on their methods of reproduction.

Differentiate between imperfect fungi and all other fungi.

Reproduction

*Asexual and sexual reproduction involve spores.

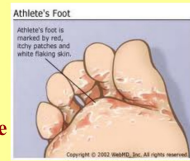
*In asexual one hyphae produces the spores through cell division.

*Sexual two hyphae join and use meiosis to produce spores.

*Fungi are classified based on the structure formed when hyphae join.

Structure of Fungi

*They are consumers that live in water/ moist areas with hyphae that produce enzymes in digestion. Allowing fungal cells to absorb nutrients.



*Most are saprophytes the rest are parasites.

Reproduction

*Asexual and sexual reproduction involve spores.

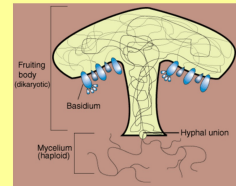
*In asexual one hyphae produces the spores through cell division.

*Sexual two hyphae join and use meiosis to produce spores.

*Fungi are classified based on the structure formed when hyphae join.

Club Fungi

*Mushrooms are the most common. The part that is visible is the reproductive structure (basidium).



*The hyphae are in the soil or on the food source.

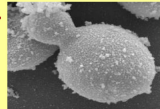
Sac Fungi



*Yeast, molds, and truffles produce spores in the ascus.



*Yeast is single celled and reproduces through budding. It is important in making bread rise. As it feeds it produces alcohol/CO2 as waste the CO2 makes the bread rise.



Zygotc Fungi

*Black fuzzy mold found on bread.



*Produce spores in the sporangium.

Imperfect Fungi

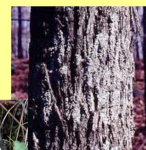
*Are fungi that DON'T reproduce sexually or have not been observed reproducing sexually



*They are put in a group if that observation takes place.

Lichens

*Combination of fungus and cyanobacteria or green algae.



*They work together for food and shelter.

Importance of Lichens

*food source, weather rocks/create soil, and are biological indicators.



Fungi and Plants

*The fungus helps the plant absorb certain nutrients while the plant supplies food for the fungus.



Fossilized Fungus

***Scientist believe the relationship between fungus/plant allowed plants to move from water to land.**

Importance of Fungi

***Food source, break down and recycle nutrients, used in medicine.**

***Some are poisonous, destroy crops, can cause illness and death.**